



altro

the future is safer with altro

NEW
40 Colours

Altro Suprema™ II

Safety Flooring

www.altro.com

Improved cleanability





the future is safer with altro

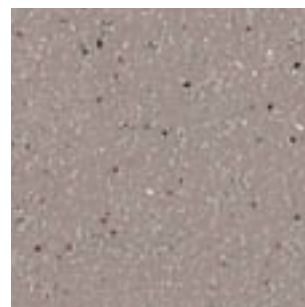
altro



Melon SU2061
WR271 / A1M271 / LRV 33



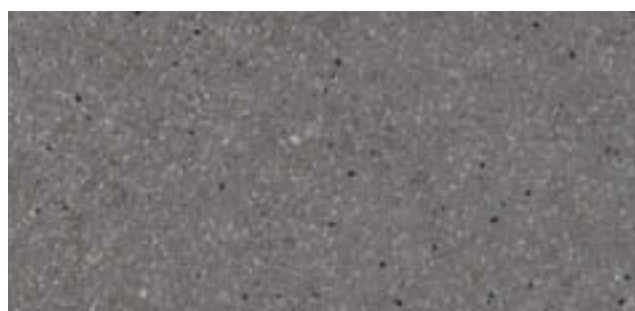
Raven SU2054
WR277 / A1M100 / LRV 7



Shell SU2055
WR268 / A1M79 / LRV 39



Malibu SU2062
WR272 / A1M272 / LRV 26



Shadow SU2056
WR269 / A1M84 / LRV 24



Flamingo SU2063
WR276 / A1M276 / LRV 16



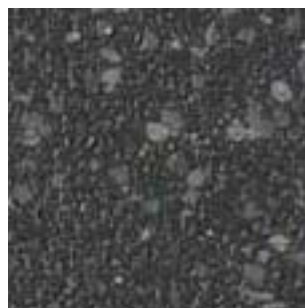
Berry SU2059
WR275 / A1M44 / LRV 8



Grape SU2058
WR274 / A1M34 / LRV 7



Tangerine SU2052
WR273 / A1M273 / LRV 20



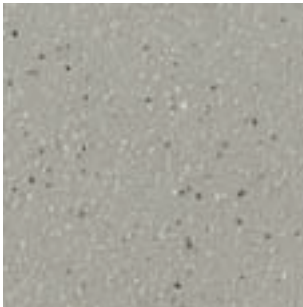
Fossil SUI2067
WR232 / A1M82 / LRV 12



Platinum SUI2064
WR201 / A1M84 / LRV 24

N.B. Exact colour matches with samples cannot be guaranteed.
In order to view the full design please request a larger sample of
your preferred choice or visit www.altro.com/suprema
Exakte Farbgleichheit mit den gezeigten Mustern kann nicht
garantiert werden. Für einen genauen Überblick über das Design
des Produktes Ihrer Wahl, fordern Sie bitte ein größeres Muster an
oder besuchen uns unter www.altro.de/suprema
N.B. No se puede garantizar que el color sea exacto al de las
muestras. Para ver mejor el diseño por favor solicite una muestra
más grande de su opción preferida o visite
www.altroscandess.com/suprema

Altro Suprema™ II with improved cleanability



Dew SU2036
WR191 / A1M191 / LRV 45



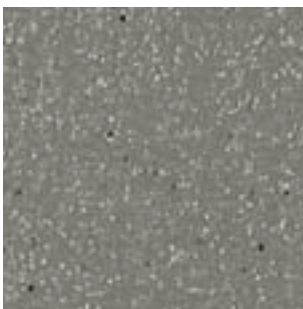
Bluebird SU2037
WR231 / A1M73 / LRV 10



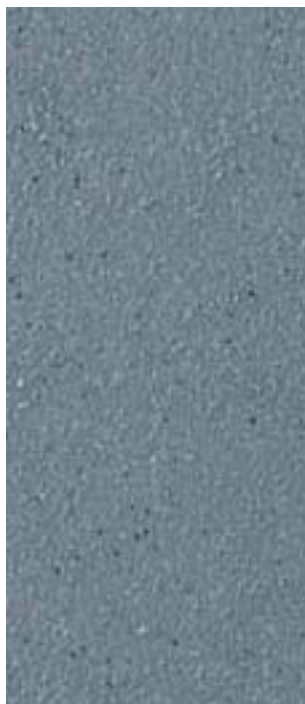
Caspian SU2038
WR194 / A1M71 / LRV 18



Olive SU2048
WR263 / A1M89 / LRV 14



Wolf SU2050
WR261 / A1M81 / LRV 29



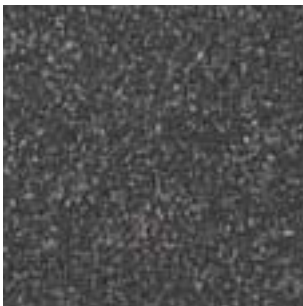
Bubble SU2039
WR285 / A1M203 / LRV 34



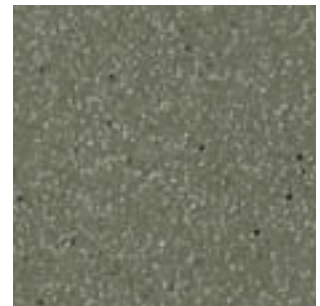
Aegean SU2057
WR270 / A1M56 / LRV 23



Vine SU2035
WR233 / A1M233 / LRV 20



Flint SU2034
WR82 / A1M82 / LRV 13



Fennel SU2049
WR262 / A1M154 / LRV 25



Moon SUI2065
WR191 / A1M191 / LRV 44



Cotton SUI2071
WR284 / A1M01 / LRV 65



Bluewater SUI2073
WR194 / A1M71 / LRV 17



Meadow SUI2072
WR233 / A1M233 / LRV 21

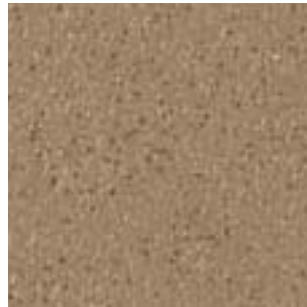


TRRL > 36

R10



Loam SU2047
WR260 / A1M260 / LRV 8



Prairie SU2044
WR279 / A1M20 / LRV 31



Wheat SU2051
WR281 / A1M225 / LRV 36



Parchment SU2041
WR267 / A1M20 / LRV 45



Oatmeal SU2046
WR265 / A1M265 / LRV 38



Paprika SU2043
WR278 / A1M42 / LRV 13



Honey SU2053
WR152 / A1M152 / LRV 32



Taupe SU2040
WR282 / A1M239 / LRV 23



Sugar SU2042
WR284 / A1M01 / LRV 65



Poppy SU2045
WR280 / A1M238 / LRV 10



Cocoa SU2060
WR62 / A1M62 / LRV 10



Owl SUI2068
WR20 / A1M20 / LRV 40



Lava SUI2070
WR260 / A1M260 / LRV 8



Earth SUI2066
WR282 / A1M239 / LRV 23



Calico SUI2069
WR283 / A1M20 / LRV 52

Flooring Type Tipo de pavimento Belagsart		EN 13845/ EN 13553	Safety flooring Suelo de seguridad antideslizante Sicherheitsbodenbelag
Classification for use Areas de uso Einsatzbereiche		EN 685	34 & 43 34 y 43 34 & 43
Slip Resistance Resistencia al deslizamiento Rutschsicherheit*		TRRL EN 13845 EN 13893 DIN 51130	>36 Esf DS R10
Thickness Espesor Total Gesamtdicke		EN 428	2 mm
Flexibility Flexibilidad Flexibilität		EN 435	Pass Conforme bestanden
Wear Layer Capa de uso Nutzschicht		EN 429	0.8 mm
Weight Peso Flaechengewicht		EN 430	2.4 kg/m ²
Roll Dimensions Dimensiones del rollos Rollenabmessungen		EN 426	2 m x 20 m = 40 m ²
Light Fastness Resistencia a la luz Lichtechtheit		EN 20105-B02	>6
Sound Insulation Aislamiento acústico Trittschal		ISO 140-8	5 dB
Wear Resistance Abrasion Verschleißverhalten		EN 13845	<10% particles lost over 50000 Cycles <10% de las partículas perdidas en 50.000 ciclos <10% Partikel wurden über 50000 Umdrehungen verloren
Indentation Punzonamiento Resteindruck		EN 433	< 0.10mm
Fire Performance Reacción al fuego Brandverhalten		EN 13501-1 EN ISO 9239-1 EN ISO 11925-2	Class Bfl s1 >8kW/m ² Pass Clase Bfl s1 >8kW/m ² Conforme Klasse Bfl-s1 >8kW/m ² , bestanden
Chemical Resistance Resistencia a los productos químicos Chemikalieneinwirkung**		EN 423	Good Buena beständig
Castor Chair Abrasion Huellas de sillas de ruedas Stuhlrollenbeanspruchung		EN 425	Pass Conforme geeignet
Under floor heating Calefacción por el suelo Fußbodenheizung		EN 12667	Suitable Apto geeignet
Electrical Behaviours Características eléctricas Elektrisches Verhalten		EN 1815	< 2 kV Antistatic < 2 kV Antiestáticas < 2 kV antistatisch
VOC Emissions Emisiones de VOC VOC Emissionen		prEN 15052 Section 01350 AgBB/DiBt	Low/Pass/Approved Baja/Conforme/Aprobado gering/geeignet/zugelassen
Biocide Bakteriostat Bacteriostático			Contains Integral Biocide Enthält Bakteriostat Contiene agente bacteriostático integral

*For wet areas where barefoot slip resistance is required such as showers and swimming pool surrounds see Altro Marine™ 20/T20. Please also refer to local building regulations/codes of practice.

** Caution Ketone/Aromatic Solvents. Please contact Altro for further technical advice regarding staining and chemical resistance.

Installation and Maintenance

All Installations in accordance with Altro safety flooring instructions and Local Codes of Practice. Please refer to Altro Cleaning Card for maintenance advice. Failure to install and maintain Altro floors in accordance with installation instructions can affect its performance and slip resistance. Floors should be protected from other trades and thoroughly cleaned before handover.



Contains recycled material

EN14041
0120
GB06/72664

Manufactured by:
Altro Ltd, Works Road
Leitchworth Garden City
SG6 1NW, United Kingdom

For further information, Light Reflectance Values, Weld Rod and Mastic codes, please visit www.altro.com/suprema
 Für weitere Informationen über Lichtreflektionswerte, sowie Artikelnummern für Schweißschnüre und Dichtmasse besuchen Sie uns bitte auf www.altro.de/suprema
 Para más información sobre el Índice de Reflectancia de la Luz, barras de soldadura y mastiques visite www.altroscandess.com/suprema